



Clarity Amino Acid Analyzer SW

www.sykam.com

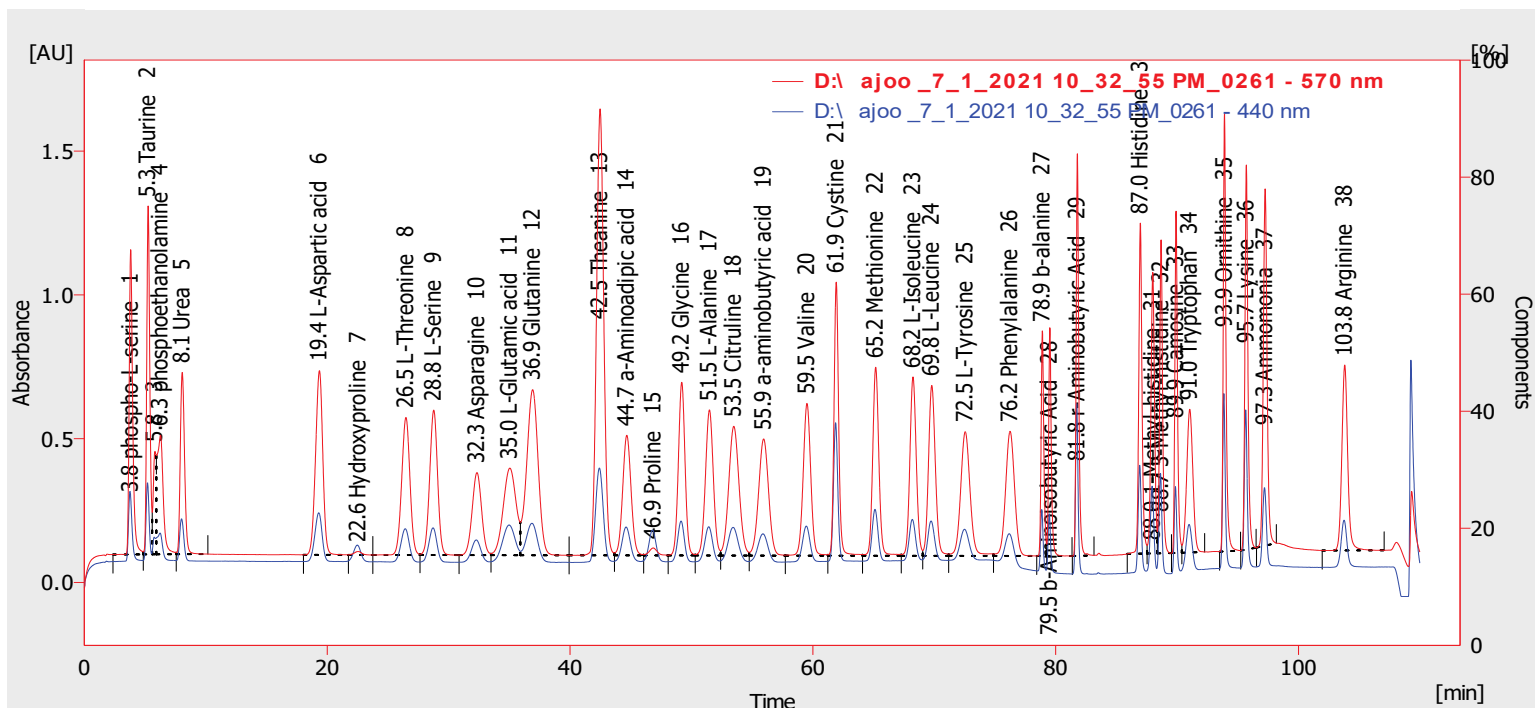
Autostop : 110.00 min
Subtraction Chromatogram : (None)

External Start : Start - Restart, Down
Matching : No Change

Base : Area
Scale Factor : 1
Unretained Time : 0.00 min
Result Table Reports : All Identified Peaks
Method User Variables:
MethodUserVar1 : 0

Calibration File : 20210614-1 physiological 100
Units After Scaling : nmol
Column Length : 150.00 mm
Hide ISTD Peak : Enabled
MethodUserVar2 : 0

Calculation : ESTD
Uncal. Response : 0
Column Calc. : Statistical moments
MethodUserVar3 : 0



Result Table (ESTD - D:\ ajoo _7_1_2021 10_32_55 PM_0261 - 570 nm)

	Reten. Time [min]	Response	Amount [nmol]	Compound Name	Resolution [-]	Symmetry/Tailing [-]
1	3.813	21495.248	100.000	phospho-L-serine		1.384
2	5.253	21633.204	100.000	Taurine	2.930	1.134
4	6.267	14346.574	100.000	phosphoethanolamine	0.622	1.464
5	8.060	15601.054	1000.000	Urea	2.220	1.195
6	19.360	26695.641	100.000	L-Aspartic acid	12.904	0.951
7	22.560	522.316	100.000	Hydroxyproline	2.818	0.973
8	26.480	22719.466	100.000	L-Threonine	3.212	0.992
9	28.773	22924.448	100.000	L-Serine	1.854	0.987
10	32.333	15572.430	100.000	Asparagine	2.681	0.997
11	35.040	22368.548	100.000	L-Glutamic acid	1.540	0.849
12	36.920	38369.449	177.000	Glutamine	0.982	1.020
13	42.473	65007.997	143.500	Theanine	3.870	1.056
14	44.673	20297.960	100.000	a-Amino adipic acid	1.837	1.037
15	46.860	1231.404	100.000	Proline	1.767	1.158
16	49.200	23060.557	100.000	Glycine	2.135	1.008
17	51.480	22947.751	100.000	L-Alanine	2.070	1.013
18	53.487	26645.180	100.000	Citrulline	1.456	1.037
19	55.947	23370.374	100.000	a-aminobutyric acid	1.595	0.983
20	59.513	23041.146	100.000	Valine	2.686	1.009
21	61.927	25399.057	100.000	Cysteine	2.653	1.101

Result Table (ESTD - D:\ ajoo _7_1_2021 10_32_55 PM_0261 - 570 nm)

	Reten. Time [min]	Response	Amount [nmol]	Compound Name	Resolution [-]	Symmetry/Tail ing [-]
22	65.173	23153.751	100.000	Methionine	4.076	1.065
23	68.247	22879.904	100.000	L-Isoleucine	3.277	1.073
24	69.793	23502.542	100.000	L-Leucine	1.547	1.075
25	72.547	23458.249	100.000	L-Tyrosine	2.277	1.055
26	76.240	22371.637	100.000	Phenylalanine	2.690	1.006
27	78.900	12015.354	100.000	b-alanine	3.018	1.300
28	79.520	12058.683	100.000	b-Aminoisobutyric Acid	1.568	1.139
29	81.787	21134.398	100.000	r-Aminobutyric Acid	5.900	1.229
30	86.973	21430.939	100.000	Histidine	12.079	1.162
31	87.993	20276.161	100.000	1-Methyl-histidine	2.006	1.033
32	88.680	18685.805	100.000	3-Methyl-histidine	1.397	1.061
33	89.913	18116.088	100.000	Camosine	2.990	1.264
34	91.040	17724.761	100.000	Tryptophan	1.690	0.962
35	93.907	23921.618	100.000	Ornithine	4.300	1.271
36	95.700	23256.879	100.000	Lysine	4.348	1.202
37	97.253	27037.624	100.000	Ammomonia	3.089	1.093
38	103.807	21762.766	100.000	Arginine	9.206	1.088
	Total		4720.500			

Result Table (ESTD - D:\ ajoo _7_1_2021 10_32_55 PM_0261 - 440 nm)

	Reten. Time [min]	Response	Amount [nmol]	Compound Name	Resolution [-]	Symmetry/Tail ing [-]
1	22.480	2456.690	353.600	Hydroxyproline		0.969
2	46.793	4524.179	335.042	Proline	21.735	1.004
	Total		688.642			